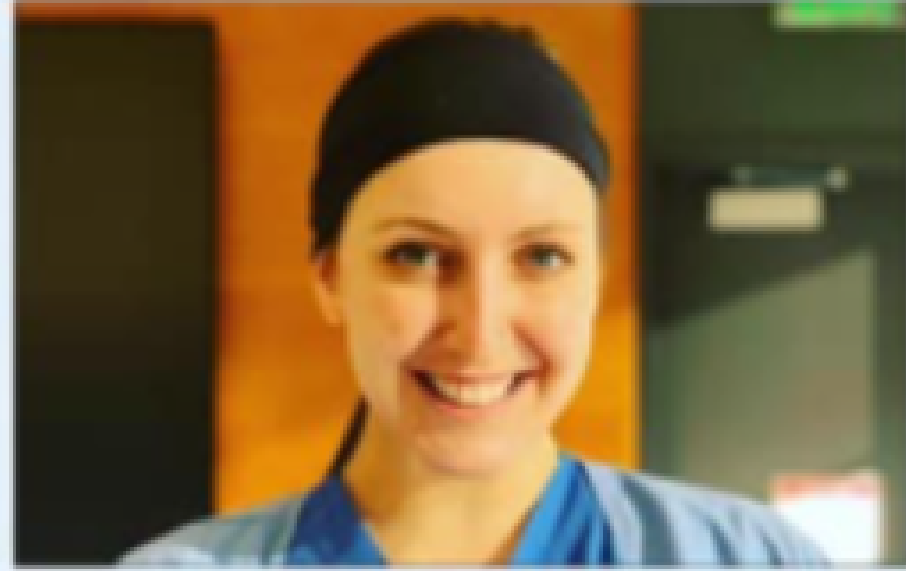


Structural Empowerment



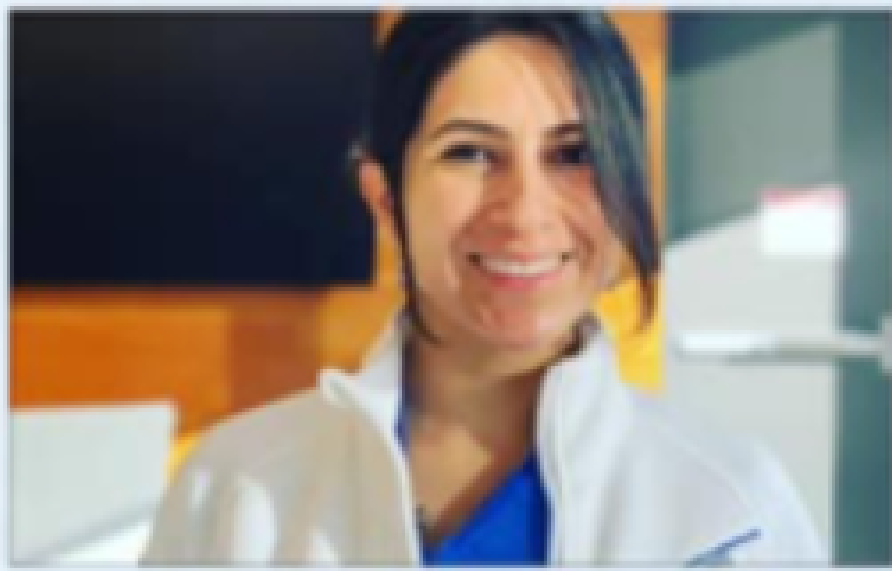
Polina Shishkina



Kate Paulus



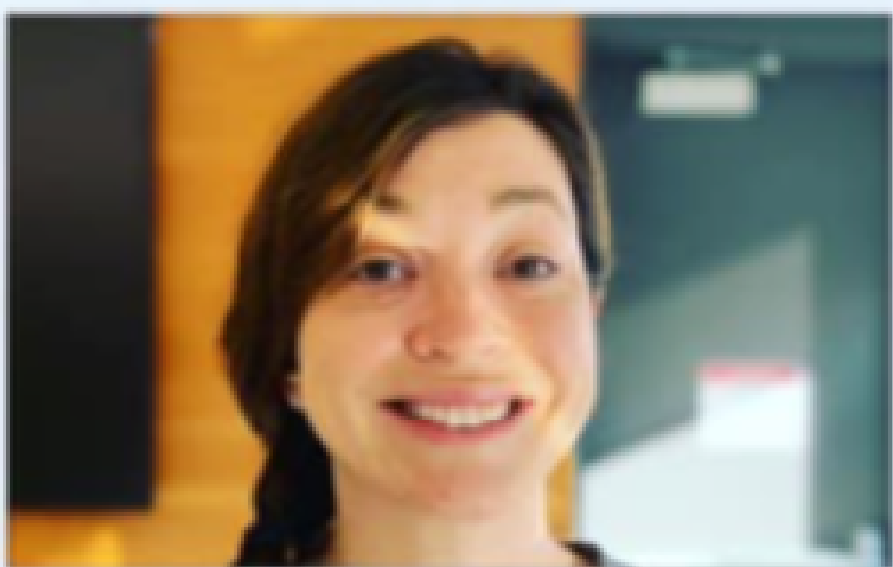
Brittaney West



Gloria Tintaya



with CEPD and Staffing Department Champions



Sherry Bohlen



Tiffany Johnson



Jennifer Pickett

Yet again, Stanford Health Care's nurses have stepped up and demonstrated their unwavering commitment to patient care.

Without hesitation, during the recent surge of COVID-19 patients, 7 PACU nurses with previous ICU experience volunteered to “re-train” and return to the ICU. Their dedication to supporting their colleagues, outstanding initiative, and resourcefulness demonstrates a deep commitment to patient care.